

No. of Printed Pages : 2

Roll No.

120944/030944

4th Sem. / Electrical Engg

Subject : Electrical Engineering Design and Drawing - II

Time : 3 Hrs.

M.M. : 100

SECTION-A

Note: Solve all Questions :- 15

- Q.1 a) Define earthing? 2
b) What is the purpose of earthing 3
c) What are the factors on which earth resistance value depends. 5
d) Explain limit switch with help of diagrams. 5
- Q.2 Draw the schematic and wiring diagram for starting two three phase induction motors in sequence one after the other with a defined time delay. 25

OR

Draw the schematic and wiring diagram for starting three phase induction motor from any one of the two different feeders. The motor should be able to get the supply from any one source at a time.

- Q.3 (a) Explain with the help of a neat sketch pipe earthing. 10
(b) Draw key diagram of 11KV sub-station. 10

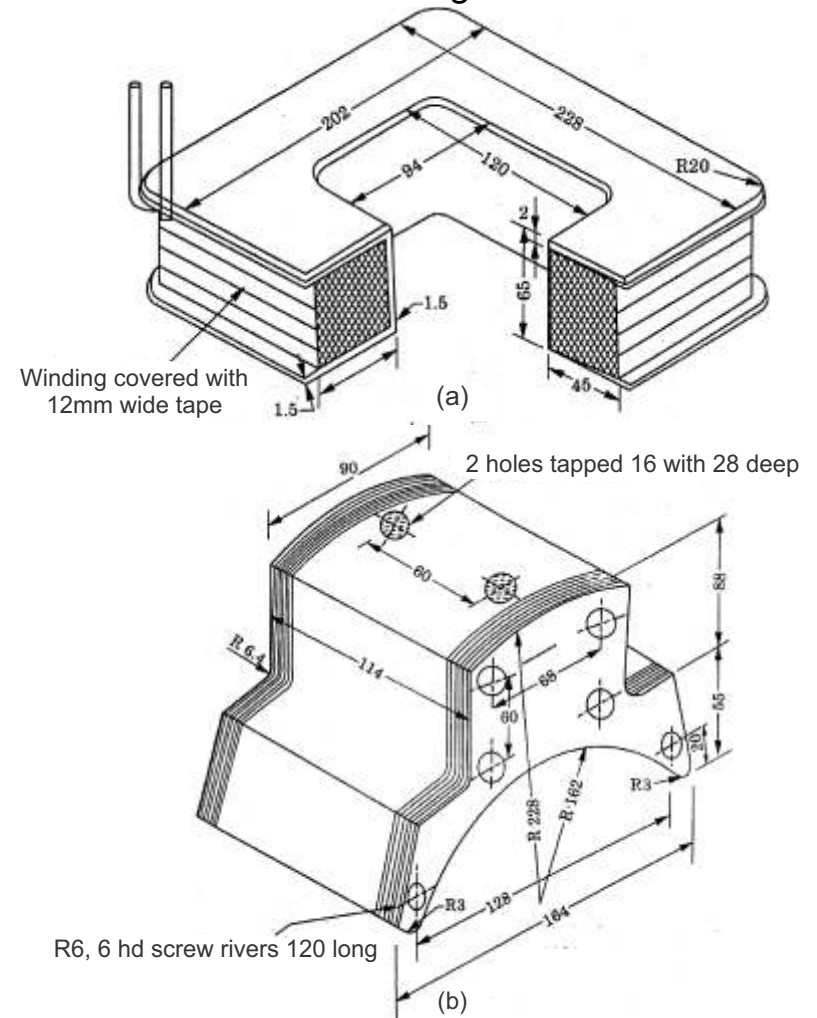
(1)

120944/030944

- Q.4 Draw the key diagram of 66KV substation. Also make a table for symbol used for different equipments. 40

OR

Draw the orthographic projection of field coil of a DC motor as shown in figure.



(2600)

(2)

120944/030944